



LUX

A wide range of models, great versatility

Two anti-squash safety valves

Adjustable working time from control board

Wide range of models suitable
for any apartment or commercial buildings

Upswung.com



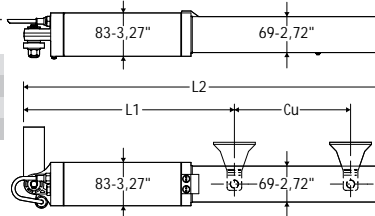
LUX

A wide range of models, great versatility



Features

model	meas. L1 (mm)	meas. Cu (mm)	meas. L2 (mm)
LUX	28.15 in (715)	10.63 in (270)	40.35" in (1025)
LUX R	28.15 in (715)	9.84 in (250)	40.35" in (1025)
LUX G	36.46 in (850)	15.35 in (390)	51.18" in (1300)
LUX FC	36.46 in (850)	10.02 in (280)	48.03" in (1220)



A full range

mod	type of locking	Working time	Max wing lenght/weight (m-kg)	Stroke working/lot (mm)	Stroke lot (mm)
LUX	electric locking	17 s	6.50 ft 660 lb (2-300)	10.63 in (270)	11.42 in (290)
LUX B	hydr.lock clos	17 s	6.50 ft 660 lb (2-300)	10.63 in (270)	11.42 in (290)
LUX 2B	hydr.lock clos/op.	17 s	6.50 ft 660 lb (2-300)	10.63 in (270)	11.42 in (290)
LUX G/2B	hydr.lock clos/op.	28 s	11.50 ft 660 lb (3,5-300)	15.35 in (390)	16.14 in (410)
LUX GV	electric locking	28 s	11.50 ft 660 lb (3,5-300)	15.35 in (390)	16.14 in (410)

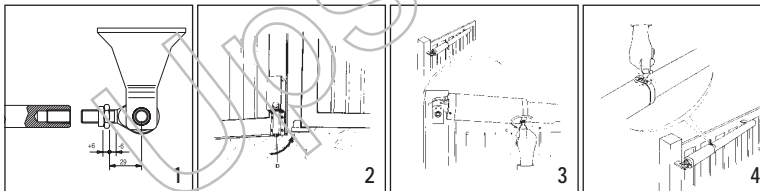
The electric lock is only necessary on models without a hydraulic lock at closing end of stroke. The electric lock mod. EBP (fig.2) consists of a continuous electromagnet with ground catch. As long as the gearmotor is operating, this device features a non-stop excitation and maintains the bolt "D" lifted until it reaches the closing end of stroke without creating any friction. This characteristic enables the pushing force to be reduced in closing which will improve the antisquash safety level.

Manual opening

- **Versions with hydraulic lock:** The gate can be released by inserting the same key "C" used to adjust the bypass valve into the triangular pivot "P" found under the actuator and turning it anti-clockwise. The gate can be opened manually (fig.3).
- **Versions without hydraulic lock:** It is sufficient to open the electric lock with its key and move the leaf manually.

Adjusting the pushing force

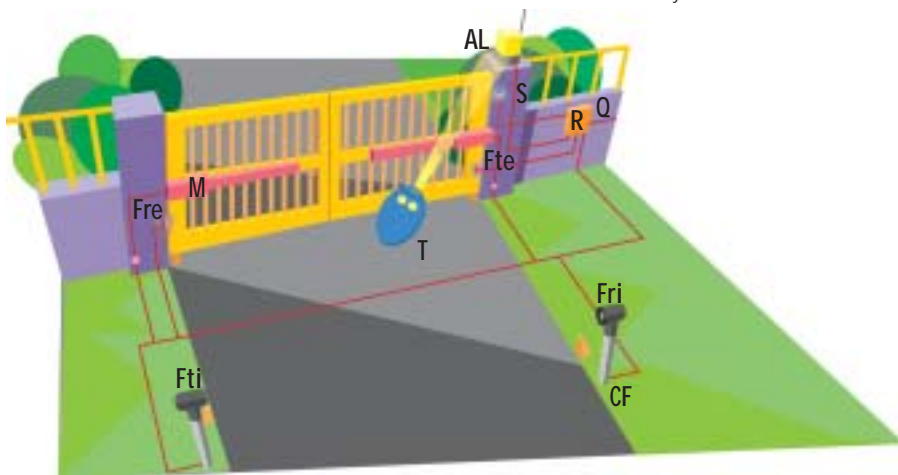
The adjustment is made by two valves marked "close" and "open" which control the pushing force during closing and opening respectively. By turning the valves towards (+), the force increased, while by turning them towards (-) it is reduced (fig.4).



Recommended features

M LUX operator
Q CONTROL board
R INTRIC receiver
T TRC transmitter

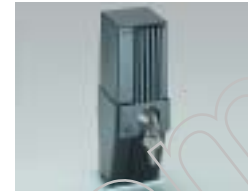
Ftx-Frx FL130 photocells
CF CF 130 photocells posts
AL SL 433 Lampo PA antenna and blinker
S INTRO key selector



DPL: Positioning template for LUX, LUX B, LUX 2B, LUXL.



EBP: 110Vac electric lock with null resistance at the stop.



EBP 24: 24Vac electric lock with 110/24V transformer to be inserted in the control unit panel.



EBPE 52-EBPE 75: 110Vac electric lock with null resistance at the stop, with external release for max 2in (50mm) (EBPE 52) and 3in (75mm) (EBPE 75) thick doors and gates.



PLE: Anchor plate used to weld LUX brackets to masonry pillars.



CLS: Release key

Recommended control units for LUX:



Technical features

Operator LUX
Power supply 120 V ± 10% 60 Hz
Motor 2800 min ⁻¹
Absorbed power 250W
Pushing force 3000N (660 lb) (300 kg)
Towing force 2600N (574 lb) (260 kg)
Impact rection hydraulic clutch
Manual manoeuvre release key
Thermal protection 320° F (160°)
Degree of protection NEMA 3 (IP55)
Controller weight 19 lb (9 kg)
Circuit oil Idrolux