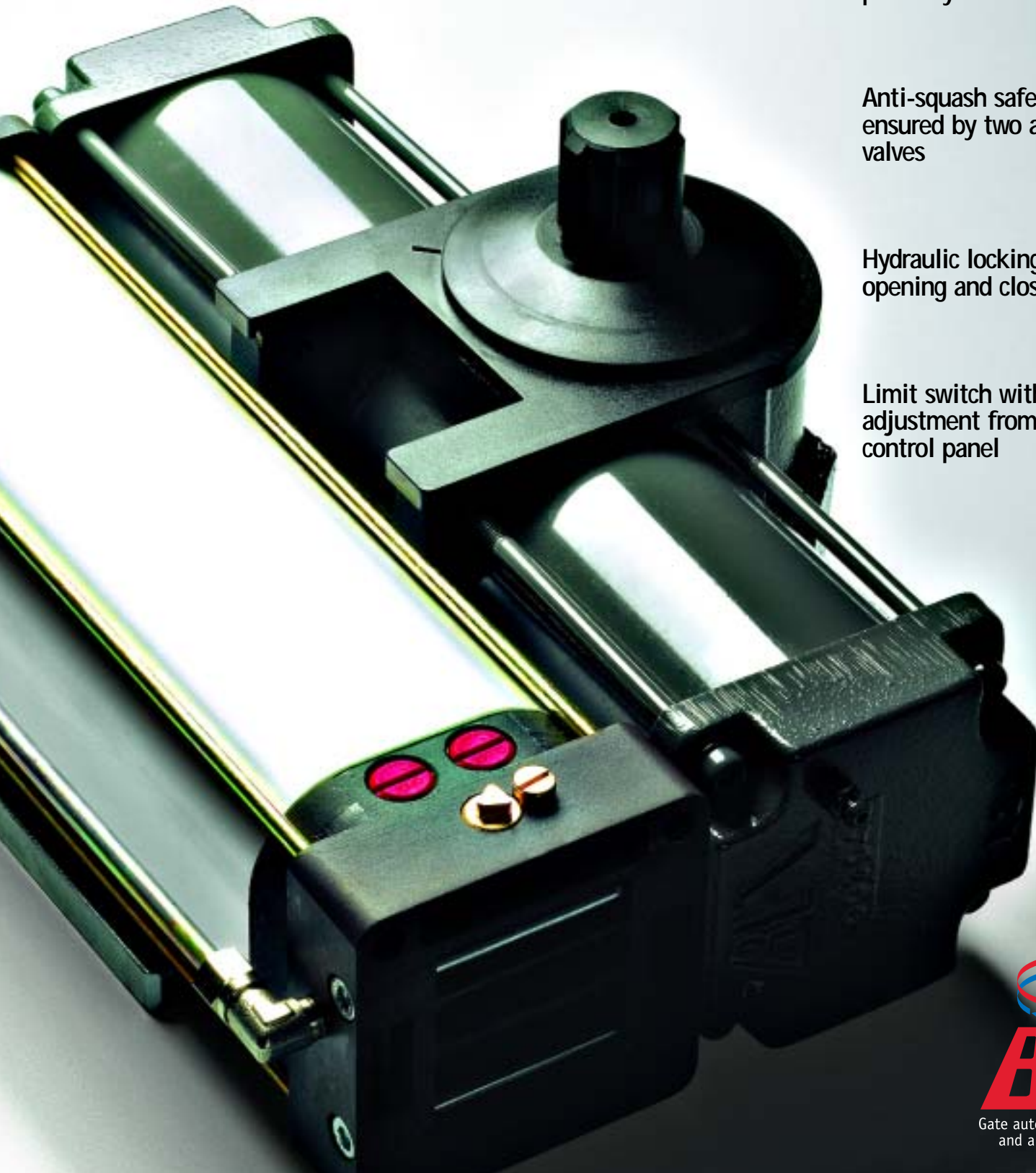




SUB

The invisible champion of elegance and handling



Single-block unit with hydraulic control unit-jack perfectly sealed

Anti-squash safety system ensured by two adjustable valves

Hydraulic locking on opening and closing

Limit switch with time adjustment from control panel



SUB

The invisible champion of elegance and handling

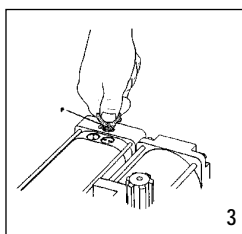
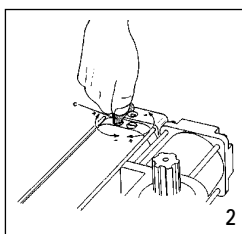
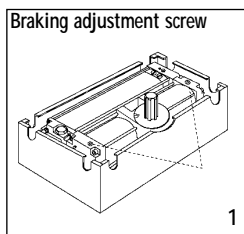


This brilliantly solves aesthetic and installation problems thanks to the exclusive BFT system, which provides totally invisible automation without hydraulic connections. The controller is not supplied with foundation case which can then be selected among the following models:
 CPS: bearing foundation case, maintenance can be carried out without disassembling the gate.
 CID: package containing cover, half-boxes, foundation plate and different accessories for building a foundation case with direct assembly of leaf onto the gearmotor.
 Endless adjustment possibilities for slow-down and pushing force. Manual opening in case of emergency.

A full range

mod	locking	angular opening	Max leaf length (m)	Max weight (kg)
SUB R SC	with slow-down with hydraulic locking	130°	5.9 ft (1,8)	1760lb (800)
SUB G SC	irreversible with hydraulic locking	180°	5.9 ft (1,8)	1760lb (800)

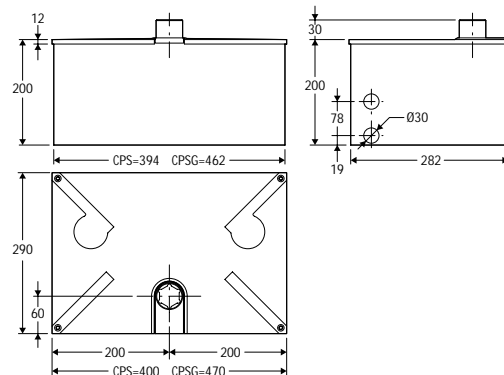
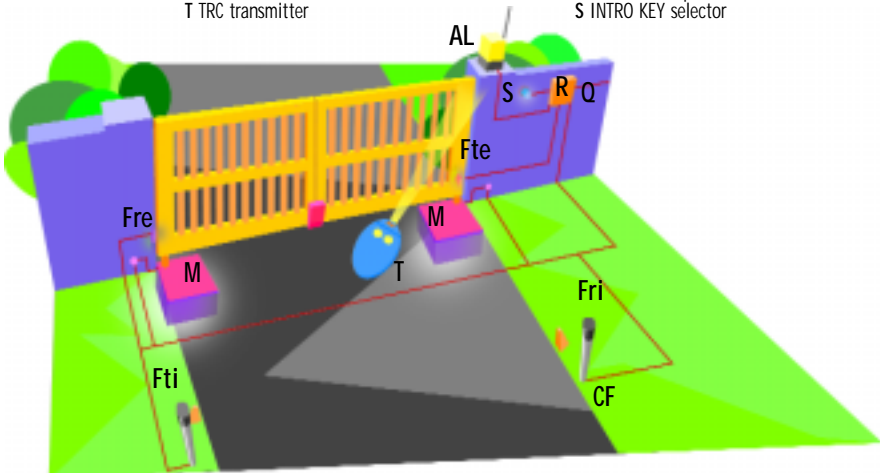
For slow-down adjustment: use the two valves located on the structure of the jack. The braking force will increase if these are turned clockwise or decrease if they are turned anti-clockwise (fig.1).
Adjustment of thrust force: This is controlled by two by-pass valves respectively marked with "close" and "open", for the adjustment of the thrust force during opening and closing. By using the special key on equipment, rotating the valves in clockwise direction you increase the drive force and rotating them counterclockwise you reduce it (fig.2).
Manual opening: In emergency cases, as for example when energy is cut-out, release the gate by manually withdrawing the protection cover, then insert the key C for the adjustment of the by-pass valve in the triangular pin and rotate it counterclockwise (fig.3).



Recommended installation

M SUB operator
 Q control board
 R INTRIC1 receiver
 T TRC transmitter

Ftx-Frx FL130 photocells
 CF CF130 photocells posts
 AL SL 433 Lampo PA antenna and blinker
 S INTRO KEY selector



CPS: bearing foundation case
 CPSG: bearing foundation case for SUB G mod.
 CID: for building a foundation case with direct assembly of leaf onto the gearmotor.
 CID G/EG: for building a foundation case with direct assembly of leaf onto the gearmotor for SUB G mod. and SUB EG mod.

Recommended control units for SUB:



Technical features

Operator	SUB
Power supply	120 V ± 10% 60 Hz single-phase
Power	250 W
Max. pressure	20 bar
Pump capacity	0.13Gal/min (0.26Gal/min SUB R)
Maximum weight of gate	1760 lb (800 kg)
Opening speed	5.4°/s (9°/s SUB R)
Max torque	400Nm
Degree of protection	NEMA 4 (IP 67)