



total access control

DKML MAGNETIC LOCKS ACCESS CONTROL

Upswung.com

features

- Superior reliability, strength and safety
- Fast and easy installation
- No residual magnetism
- Fail-safe operation assures that fire exit paths are unlocked during power outages
- MOV surge protection protects locks from transient voltage spikes
- No moving parts to wear out or break assures a long life cycle
- LED (R/G) lock status indicates if the lock is secured (green) or not secured (red)
- Built in time delay eliminates the need for costly add-on exit delay timers



total access control

THE DKML SERIES of magnetic locks offers a wide range of high quality electro-magnetic locks and brackets to accommodate most of your access control door locking requirements. Most locks are available in both surface and mortise mounts and can be ordered with special options such as LED lock status indicators and a built-in timer for automatic lock reactivation after a preset time.

TECH SPECS

models

1200lb (force) Locks:
dkml-S12 surface mount
single or dual doors
available with LED/Relay status, Delay timer

600lb (force) Locks:
dkml-S6 surface mount
single or dual doors
available with LED/Relay status, Delay timer

600lb (force) Locks:
dkml-M6 mortise mount
single doors only
available with LED/Relay status, Delay timer

300lb (force) Locks:
dkml-S3 surface mount
dkml-M3 mortise mount

2000lb (force) Shear Lock:
dksl-M20 mortise mount only
LED status and Relay contact

electrical

all models: 12 or 24 VDC field selectable
dkml-S12, dkml-S6: 500 ma@12v, 250 ma@24v
dkml-M6: 480 ma@12v, 240 ma@24v
dkml-S3, dkml-M3: 360 ma@12v, 180 ma@24v
dksl-M20: start: 1000 ma@12v, 600 ma@24v
hold: 500 ma@12v, 300 ma@24v

Relay contacts all locks:
30-Volt AC/DC, 500 ma maximum

size

dkml-S12 single: 10¹/₂ x 2⁷/₈ x 1⁹/₁₆
dual: 21 x 2⁷/₈ x 1⁹/₁₆
dkml-S6 single: 9⁷/₈ x 1⁷/₈ x 1¹¹/₃₂
dual: 19¹¹/₁₆ x 1⁷/₈ x 1¹/₃₂
dkml-M6: 9 x 1¹/₂ x 1¹/₁₆
dkml-S3: 6¹/₂ x 1³/₈ x 1¹³/₁₆
dkml-M3: 7³¹/₃₂ x 1³/₈ x 1¹³/₁₆
dksl-M20: 10⁵/₈ x 1³/₈ x 1¹/₄

weight

dkml-S12-single: 10¹/₂ lbs.
dual: 20 lbs.
dkml-S6-single: 4¹/₂ lbs.
dual: 9 lbs.
dkml-M6: 4¹/₂ lbs.
dkml-S3: 2.6 lbs.
dkml-M3: 2.6 lbs.
dksl-M20: 4.6 lbs.

Warranty: 5 year limited factory warranty

300 to 1200lbs of Holding Force

Magnetic locks are popular because of the superior reliability, security, safety and ease of installation that they offer.



fail safe

when wired with fire alarms, magnetic locks immediately release the door that they are securing, assuring that fire exit paths are open



vandal resistant

Electromagnetic locks are vandal resistant making them ideal for practically any application



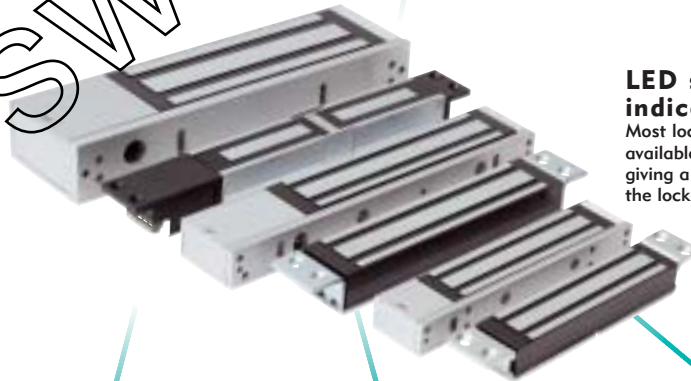
magnetic locks have no moving parts

to wear out or break which assures a locking device with an extremely long life cycle



LED status indicator

Most locks are available with an LED status indicator giving a visual indication as to whether the lock is secured or not



door controls

a full range of exit buttons and door control devices provide easy exit capability.



shear locks

provide both a magnetic and mechanical connection to assure superior locking performance.



quick release pop button

assures instant release when power to lock is removed

