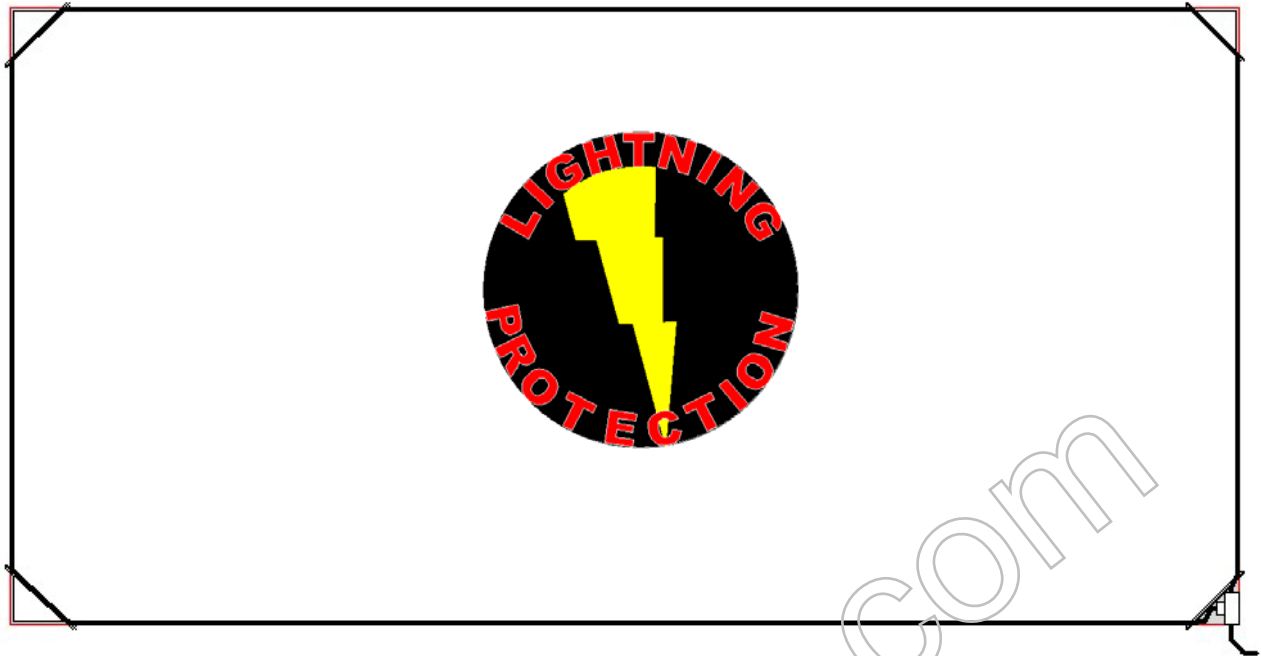


# EMX Lite Preformed Loop Installation



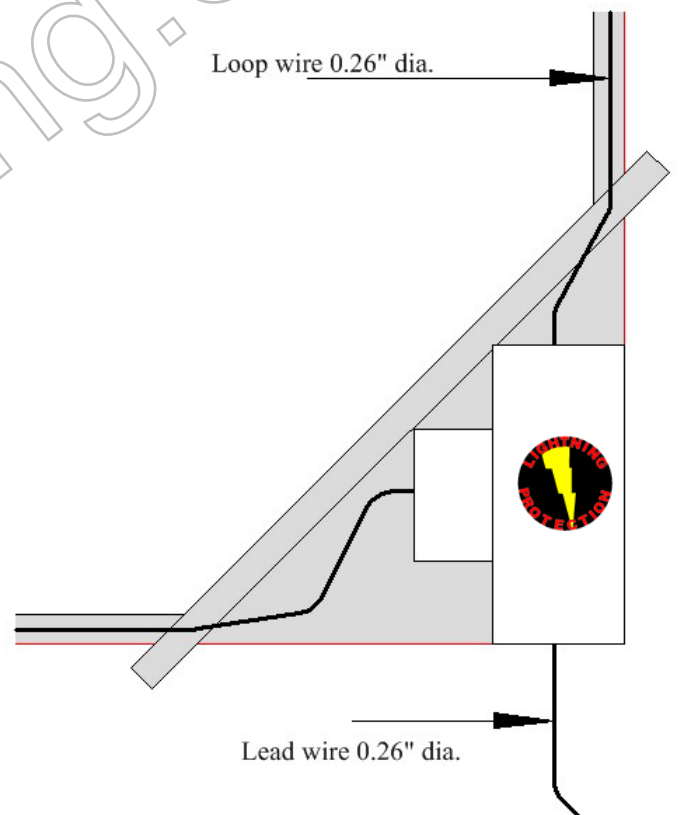
**THE EMX LITE LOOP** may be installed in new or existing concrete and asphalt by following the instructions on the back side of this sheet.

The figure above represents the layout of a standard loop installation. The "T" is installed in a corner of the saw cut closest to the placement of the operator or detector.

The figure to the right shows the location and placement of the "T" into a corner of the saw-cut after the removal of the corner section (indicated in gray). The lead and loop wires are placed into the saw-cut and trench as needed.

The saw-cuts are relieved at a 45° angle approximately 3.5" from the corners. This allows the wire to be placed in the slot without having a sharp corner cut into the jacket potentially causing loop failure.

**Note:** Detection height is approximately 70% of shortest side of the loop. Example: 4' x 8' = approximately 34 inches detection height from wire surface. The deeper into the substrate that the loop is installed will reduce the detection height above the substrate surface.



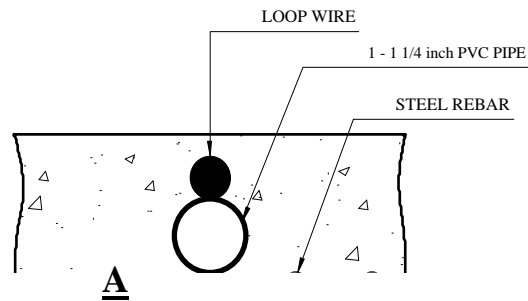
**EMX**  
INDUSTRIES, INC.

# EMX Lite Preformed Loop Installation

## LOOP INSTALLATION

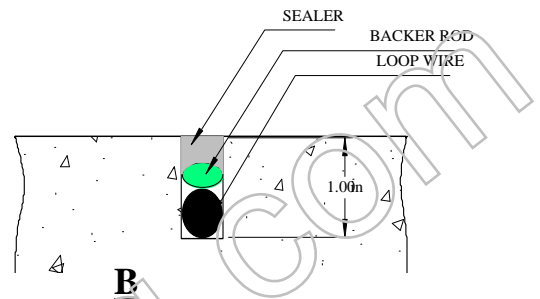
### NEW SLAB POUR

Ty-Wrap 1- 1/4" PVC pipe to the top of the rebar in the size and configuration of your loop size. (example 4'x8') Then Ty-wrap the loop to the top of the PVC frame. This stabilizes the loop during the pour and separates it from the rebar. Refer to drawing "A"



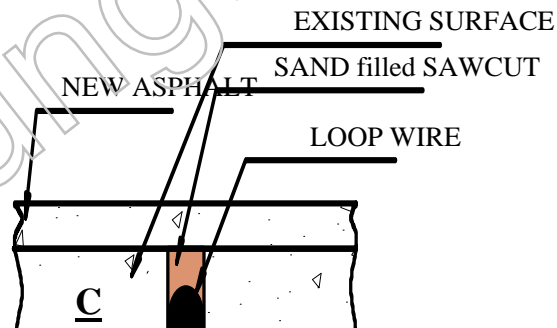
### SAW CUT EXISTING SURFACE

Cut 1" deep cut in existing surface, place 45° cut at the corners to relieve stress on the wire. Notch out for the "T" and place into the saw cut. Place backer material into saw cut over loop wire and push down tightly. Place a good grade sealer over the saw cut to seal surface. Refer to drawing "B"



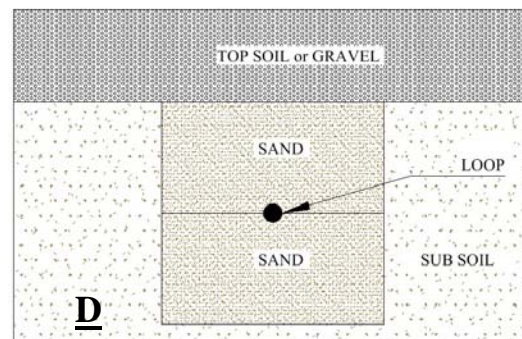
### RESURFACE ASPHALT INSTALLATION

Saw cut existing surface 3/4" deep and place loop into bottom of saw cut. Place sand over loop wire to surface of existing surface and pack tightly. Lay new asphalt. Refer to drawing "C"



### GRAVEL OR SOIL INSTALLATION

While this is not a recommended installation for most loops, it has been used successfully with proper preparation. Remove gravel or topsoil to a good base dig 6"-8" deep by a shovel wide. Fill half way with sand and pack tightly, place the loop into the trench and finish filling to level with sand. Pack tightly and replace gravel or soil over top. "D"



## WARRANTY

EMX INC. the product described herein for a period of 2 years under normal use and service from the date of sale to our customer. The product will be free from defects in material and workmanship. This warranty does not cover ordinary wear and tear, abuse, misuse, overloading, altered products, or damage caused by the purchaser from incorrect connections, or lightning damage.

There is no warranty of merchantability. There are no warranties expressed, implied or any affirmation of fact or representation which extend beyond the description set forth herein.

EMX Inc. sole responsibility and liability, and purchaser's exclusive remedy shall be limited to the repair or replacement at EMX's option of a part or parts not so conforming to the warranty. In no event shall EMX Inc. be liable for damages of any nature, including incidental or consequential damages, including but, not limited to any damages resulting from non-conformity defect in material or workmanship.