

AM-MIO

Input-Output Expansion Interface

For Use With the AM-3, AE-1000, & AE-2000 Access Control Systems

Installation Instructions

Linear[®]

(760) 438-7000
USA & Canada (800) 421-1587 & (800) 392-0123
Toll Free FAX (800) 468-1340
www.linearcorp.com

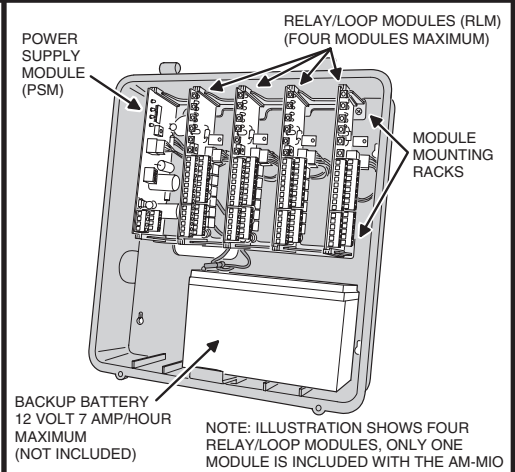
PRODUCT DESCRIPTION

The AM-MIO is an expandable input/output interface designed for use with Linear's AM-3, AE-1000, & AE-2000 access control systems. Housed in a lockable cabinet, the basic AM-MIO consists of two modules: a power supply module (PSM) and a relay/loop module (RLM). Up to three additional RLM modules can be added to fill the five-position module "rack". Each RLM module provides six Form "C" (normally open & normally closed) 5-amp relays for outputs and eight supervised loop terminals for inputs. With four RLM modules, the AM-MIO is capable of controlling 24 relay outputs and 32 loop inputs. Each module has a rotary switch to select its unique remote device address. The device address identifies each module to the system. Each module is interconnected to the controller by daisy-chained cables.

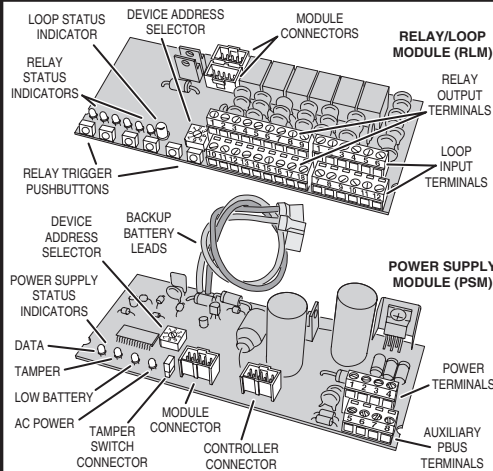
Pushbuttons on the RLM module are provided for manually triggering each relay for testing. Each relay has a red LED light to show when it's energized. A two-color red/green LED on the RLM module displays the status of the loop inputs. If all eight loops are "normal" (not shorted or open) the indicator is green. If any of the eight loops are "abnormal" (shorted or open) the indicator is red.

The power supply module distributes power to the RLM module(s). An external 16 VAC transformer powers the supply and provides charging current for a 12-volt backup battery (up to 7 amp/hour capacity). Indicators on the power supply module display its status. The green indicator lights when AC power is present and blinks when AC power is absent. The yellow indicator lights when the backup battery is low. Special power circuitry prevents fully discharging the backup battery. The status of the power supply is checked regularly by the controller. The red DATA indicator lights when data transfers. The red TAMPER indicator lights and the controller is signaled when the optional magnetic tamper switch detects that the cabinet has been opened.

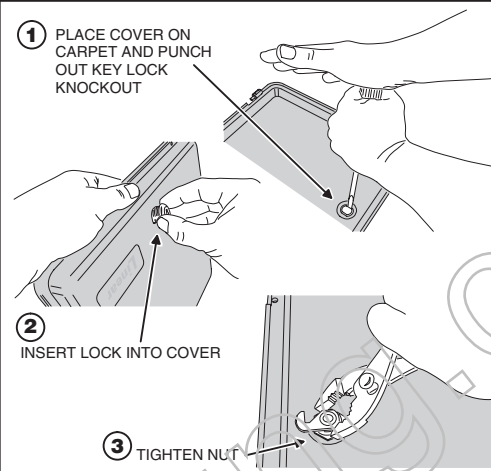
CABINET COMPONENTS



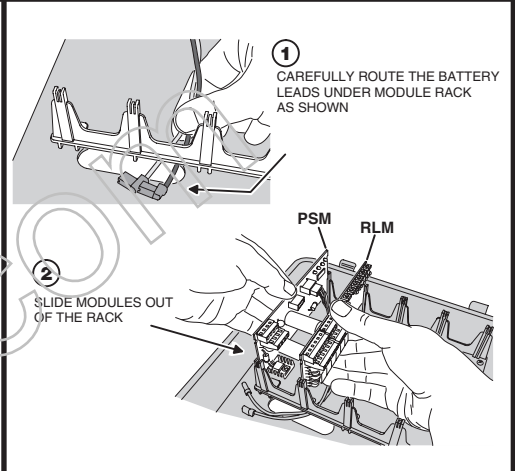
MODULE FEATURES



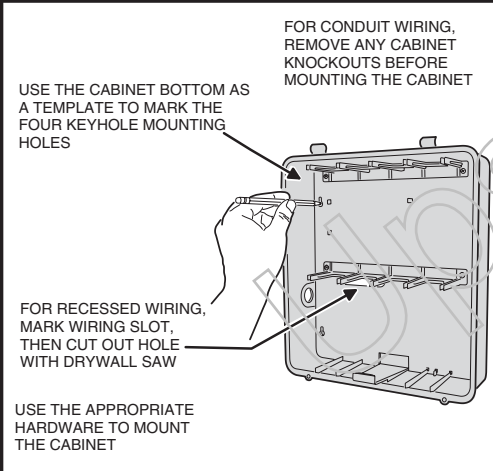
KEY LOCK INSTALLATION (OPTIONAL)



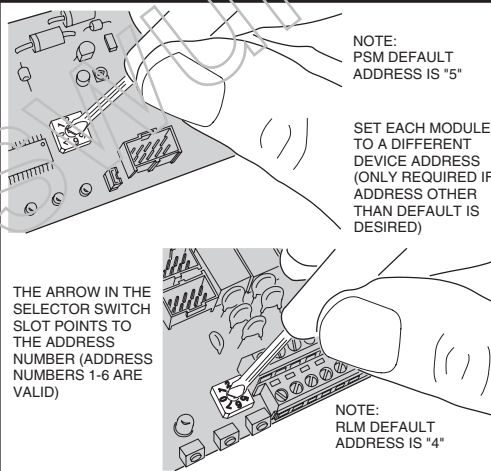
REMOVING MODULES



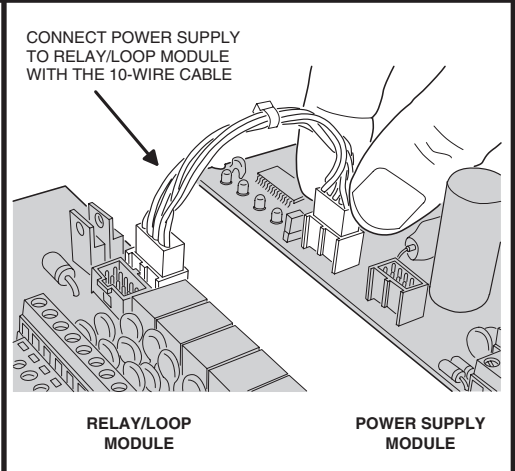
MOUNTING CABINET



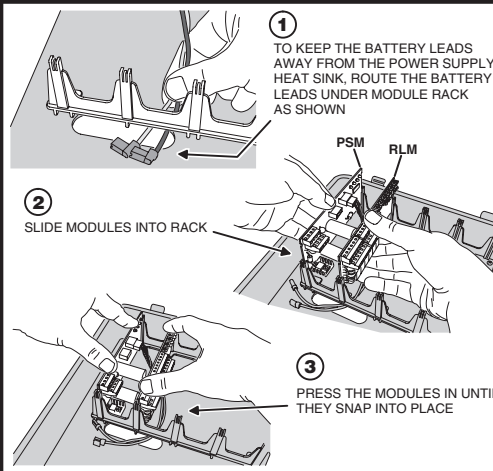
SETTING DEVICE ADDRESSES



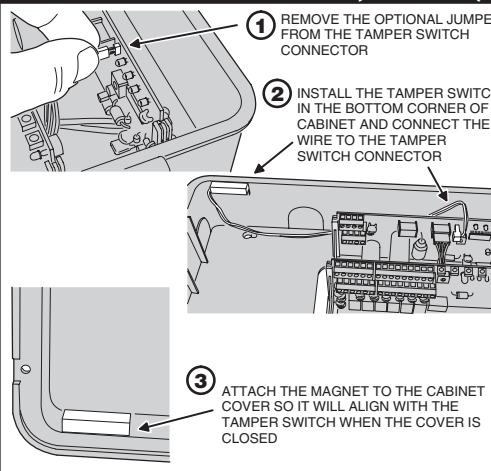
CONNECTING MODULES



INSTALLING MODULES



CONNECTING TAMPER SWITCH (OPTIONAL)



CONNECT TO ACCESS CONTROLLER

