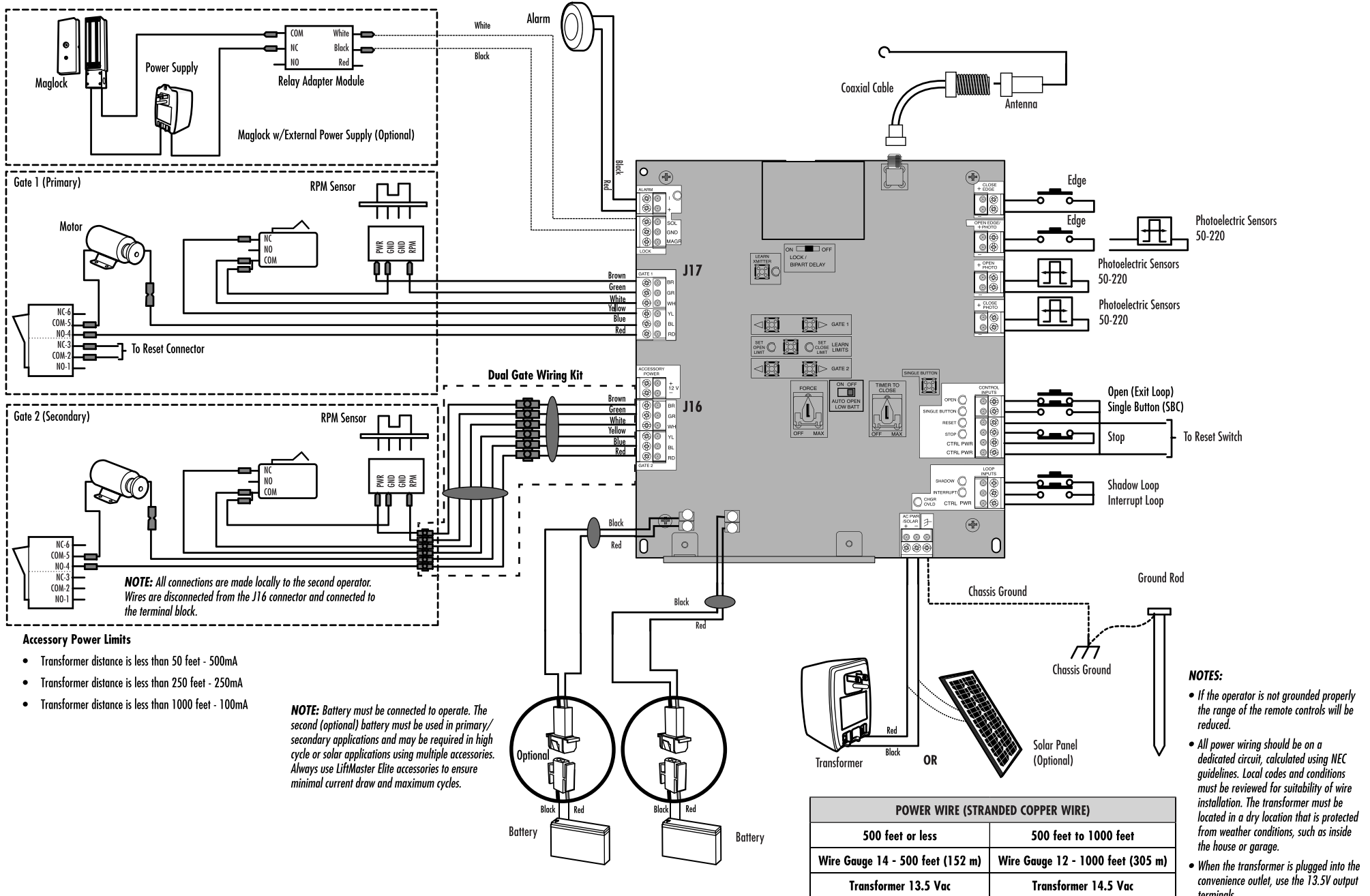


# SLIDE RSL12V & RSL12VH

## ⚡ WARNING

To protect against fire and electrocution:  
 • DISCONNECT power and battery BEFORE installing or servicing operator.

For continued protection against fire:  
 • Replace ONLY with fuse of same type and rating.



# SWING RSW12V & RSW12VH



## WARNING

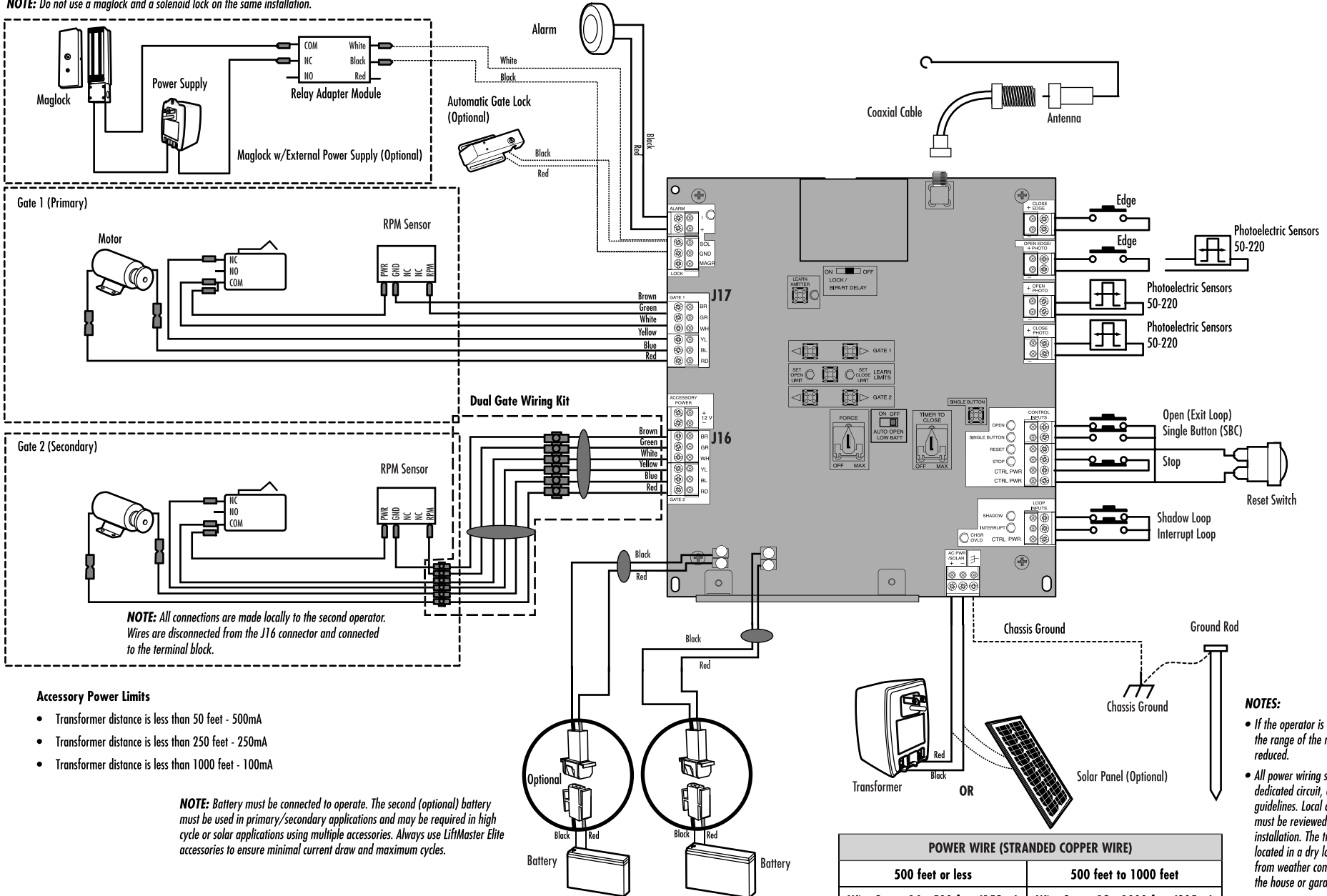
To protect against fire and electrocution:

- DISCONNECT power and battery BEFORE installing or servicing operator.

For continued protection against fire:

- Replace ONLY with fuse of same type and rating.

**NOTE:** Do not use a maglock and a solenoid lock on the same installation.



**NOTE:** All connections are made locally to the second operator. Wires are disconnected from the J16 connector and connected to the terminal block.

### Accessory Power Limits

- Transformer distance is less than 50 feet - 500mA
- Transformer distance is less than 250 feet - 250mA
- Transformer distance is less than 1000 feet - 100mA

**NOTE:** Battery must be connected to operate. The second (optional) battery must be used in primary/secondary applications and may be required in high cycle or solar applications using multiple accessories. Always use LiftMaster Elite accessories to ensure minimal current draw and maximum cycles.

### NOTES:

- If the operator is not grounded properly the range of the remote controls will be reduced.
- All power wiring should be on a dedicated circuit, calculated using NEC guidelines. Local codes and conditions must be reviewed for suitability of wire installation. The transformer must be located in a dry location that is protected from weather conditions, such as inside the house or garage.
- When the transformer is plugged into the convenience outlet, use the 13.5V output terminals.

POWER WIRE (STRANDED COPPER WIRE)	
500 feet or less	500 feet to 1000 feet
Wire Gauge 14 - 500 feet (152 m)	Wire Gauge 12 - 1000 feet (305 m)
Transformer 13.5 Vac	Transformer 14.5 Vac