

Installation Guide

LiftMaster[®] TAC2C

IMPORTANT: The TAC2C has a Ringer Equivalence Number (REN) of 5 with a TELCO line and a REN of 3 without a TELCO line.

TAC1 RETROFIT KIT FOR CROWN JEWEL SYSTEMS

Introduction

CAUTION

DO NOT run data wires and HIGH VOLTAGE wires in the same conduit. The HIGH VOLTAGE wires may interfere with the data wires and cause the unit to malfunction. To AVOID damaging gas, power or other underground utility lines, contact underground utility locating companies BEFORE digging. To prevent damage to the unit:

- Use the new 12 Vac transformer ONLY.
- Use dedicated 110 Vac outlet ONLY.

CARTON INVENTORY

Hardware Bag
Complete with: Hex Head Tamper Resistant Screws (4), Hex Tool (1), and Ground Lug (1)
 Faceplate with Processor Board (1)
 12 Volt AC 20VA Transformer (UL Listed) (1)
 Install and Programming Guide (1)
 Labels (9)

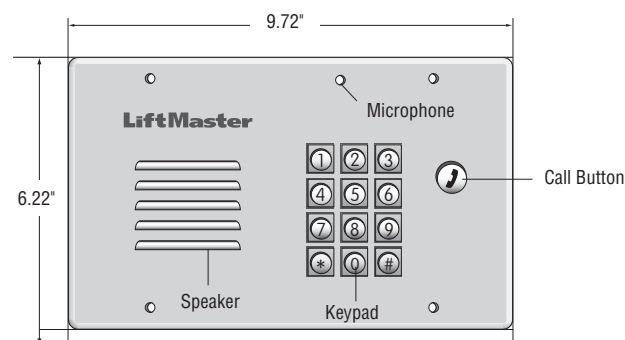
SPECIFICATIONS

Power Supply: 12 Vac 20 VA

The 110 Vac outlet must be dedicated to the unit only. This outlet should be wired back to its own 10 Amp minimum circuit breaker. This will prevent two problems:

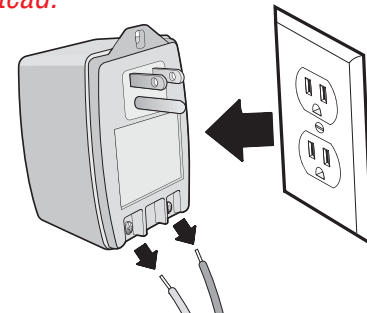
- Other equipment cannot introduce spikes, noise, surges, or dips into the power circuit.
- The unit's operation will not be affected if any other equipment develops a short circuit across the power line.

Dimensions: 9.72" x 6.22" (W x H)

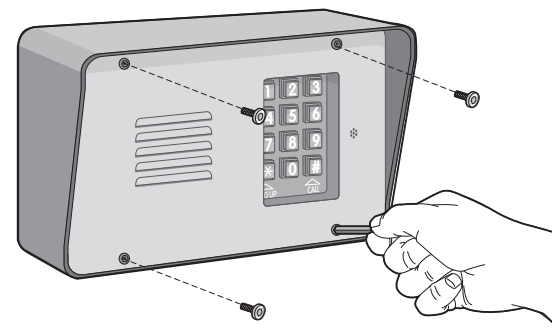


1 Unplug the transformer from the outlet. Disconnect the wires from the existing transformer.

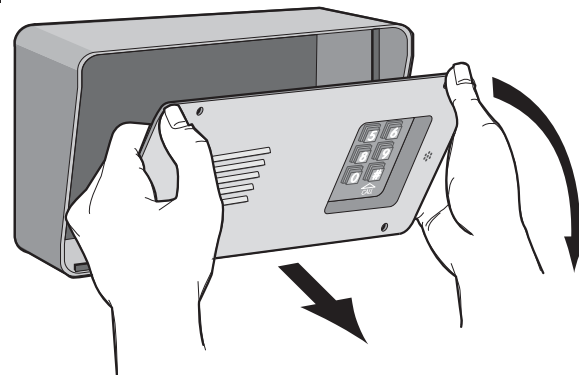
IMPORTANT NOTE: DO NOT use the existing transformer, the **provided transformer MUST be used instead.**



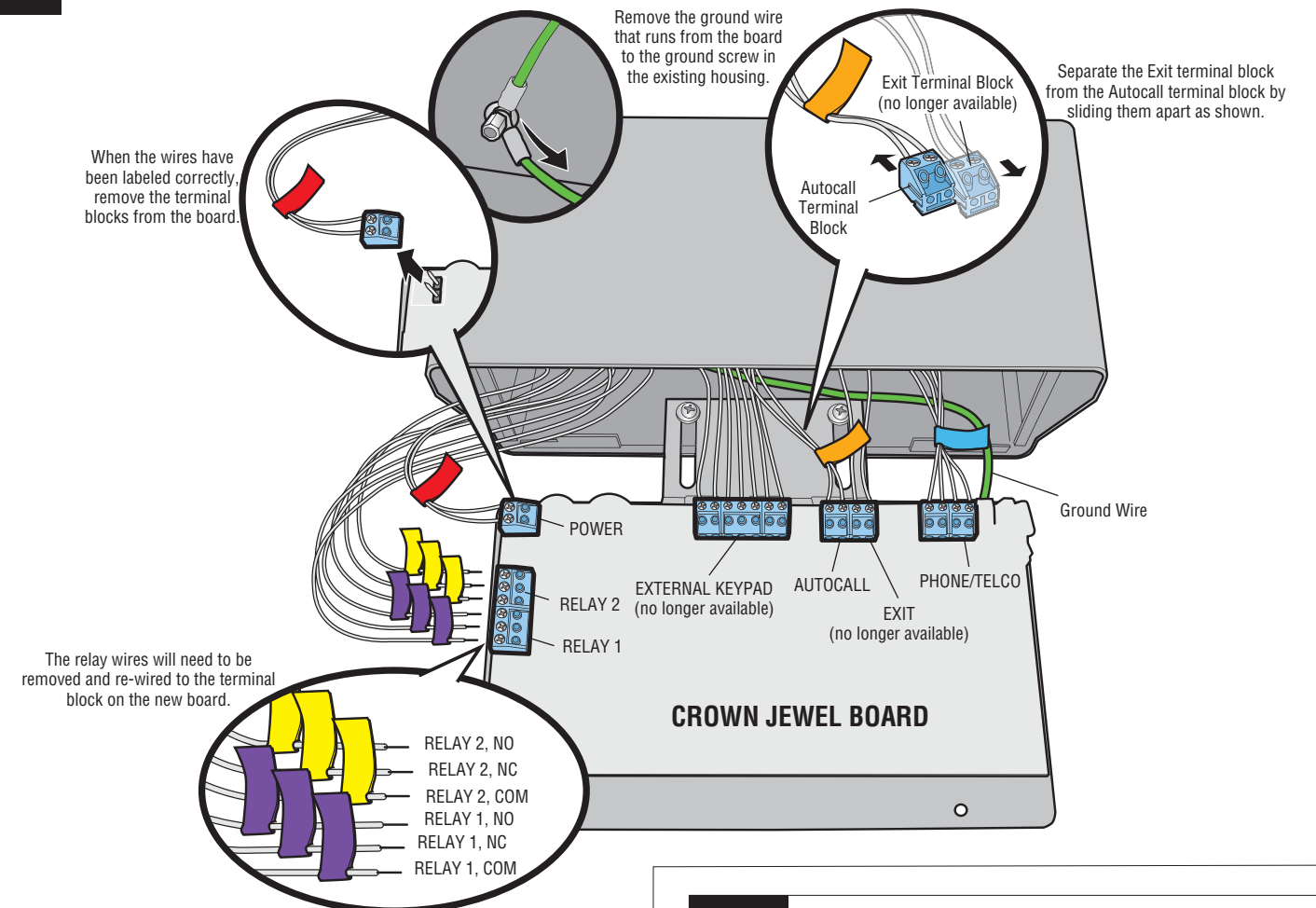
2 Remove the screws from the Crown Jewel faceplate using the provided hex tool.



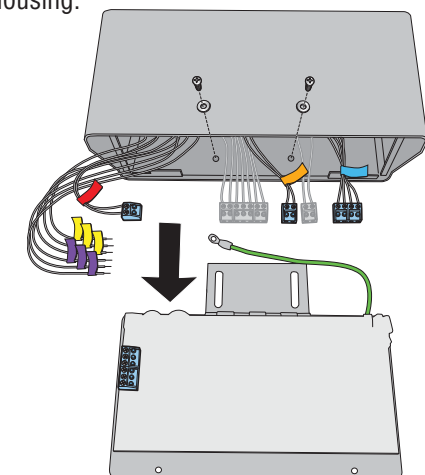
3 Slide the faceplate forward and rotate downward.



4 Identify the terminal blocks on the Crown Jewel board. Attach the provided labels to the corresponding wires as shown. Once the wires are labeled, remove them from the board.

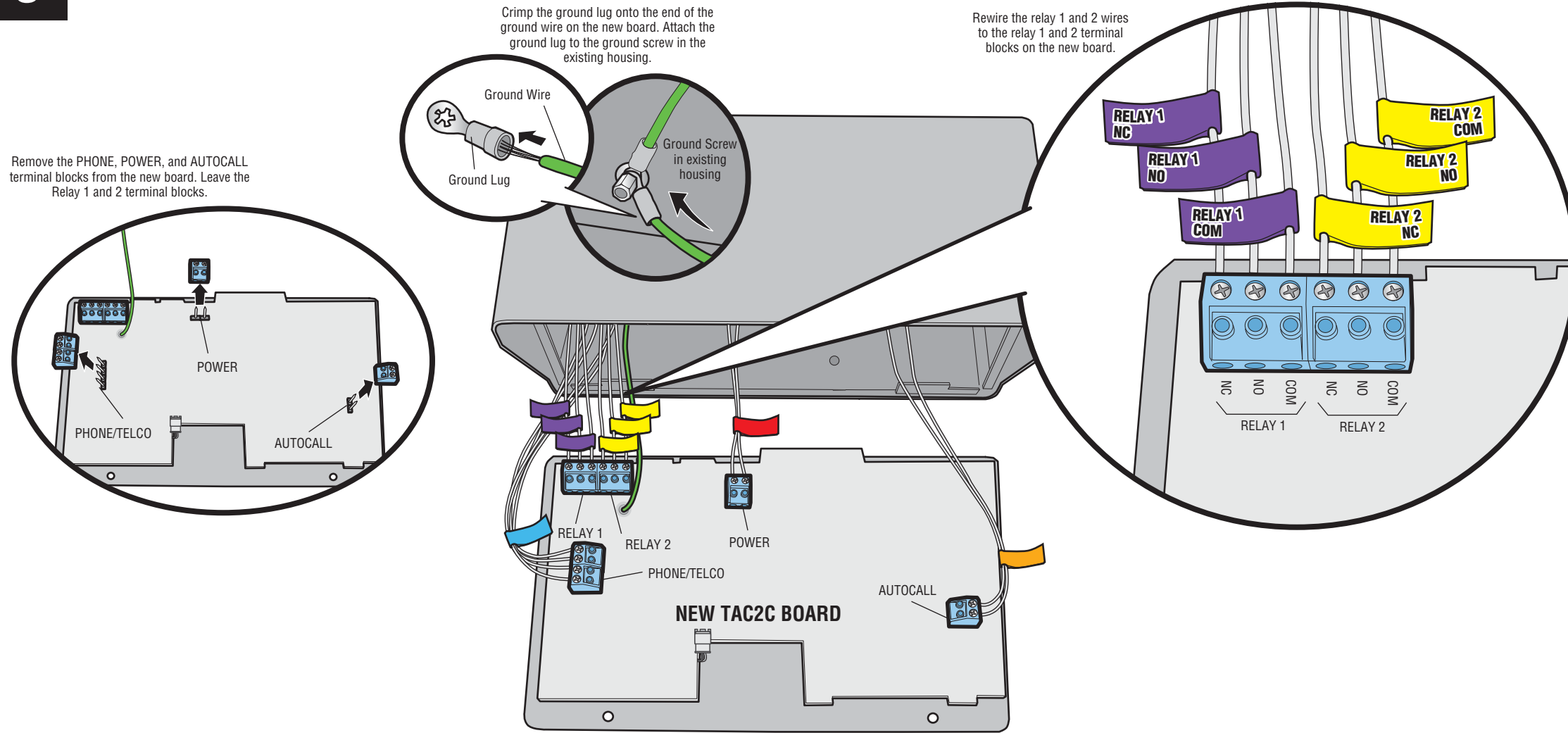


5 Remove the screws (2) securing the faceplate to the housing.



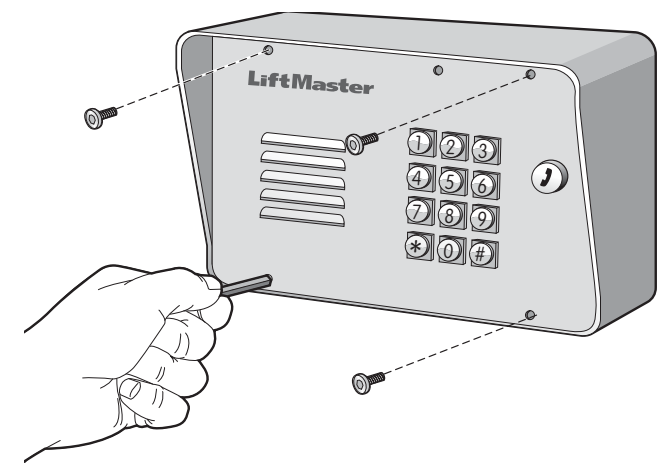
6

Attach the labeled wires to the new TAC2C board as shown.



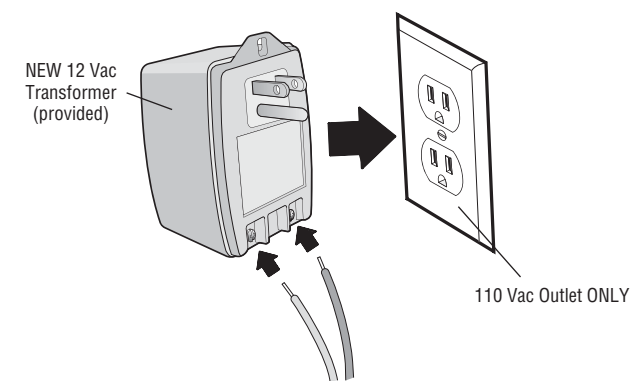
7

When wiring is complete, secure the new faceplate to the existing housing with the provided screws (4).



8

Connect the power wires to the new transformer and plug the transformer into a 110 Vac outlet ONLY, any other type of outlet will cause damage to the unit.



IMPORTANT NOTE: DO NOT use the existing transformer, the **provided** transformer **MUST** be used instead.

9

SET THE MASTER CODE

Once power is applied, the unit will begin to “click” to indicate that it is powered, and is waiting to be programmed for the unit’s Master Code. The Master Code is used to unlock the programming functions of the unit. The Master Code should not be distributed as a User Code.

- Enter on the unit’s keypad.
- Enter 4-digit Master Code. Example: 1234.
- Write down the Master Code and store in a secure location.

“BEEP” “BEEP”

Testing

TEST GATE / DOOR RELAYS


Test Relay 1

- Enter 4 digit Master Code.
- Press 1 to test Relay 1.

Test Relay 2

- Enter 4 digit Master Code.
- Press 2 to test Relay 2.

TEST THE TELEPHONE CONNECTIONS

- Place a telephone call from the resident’s telephone to verify the unit is operating properly, then hang up the phone.
- Press the “Call” button on the unit’s keypad. The telephone in the residence should ring.

- To test Relay 1 have someone answer the telephone and enter “*9” (Star + 9) to activate Relay 1. The unit will disconnect the call as soon as the relay is activated. To test Relay 2 have someone answer the telephone and enter “*5” (Star + 5). Relay 2 should activate. The unit will disconnect the call as soon as the relay is activated.

For complete programming information refer to the Programming Guide.